



Beaufort County Public Works

Stormwater Infrastructure

Project Summary

Project Summary: Seaside Road

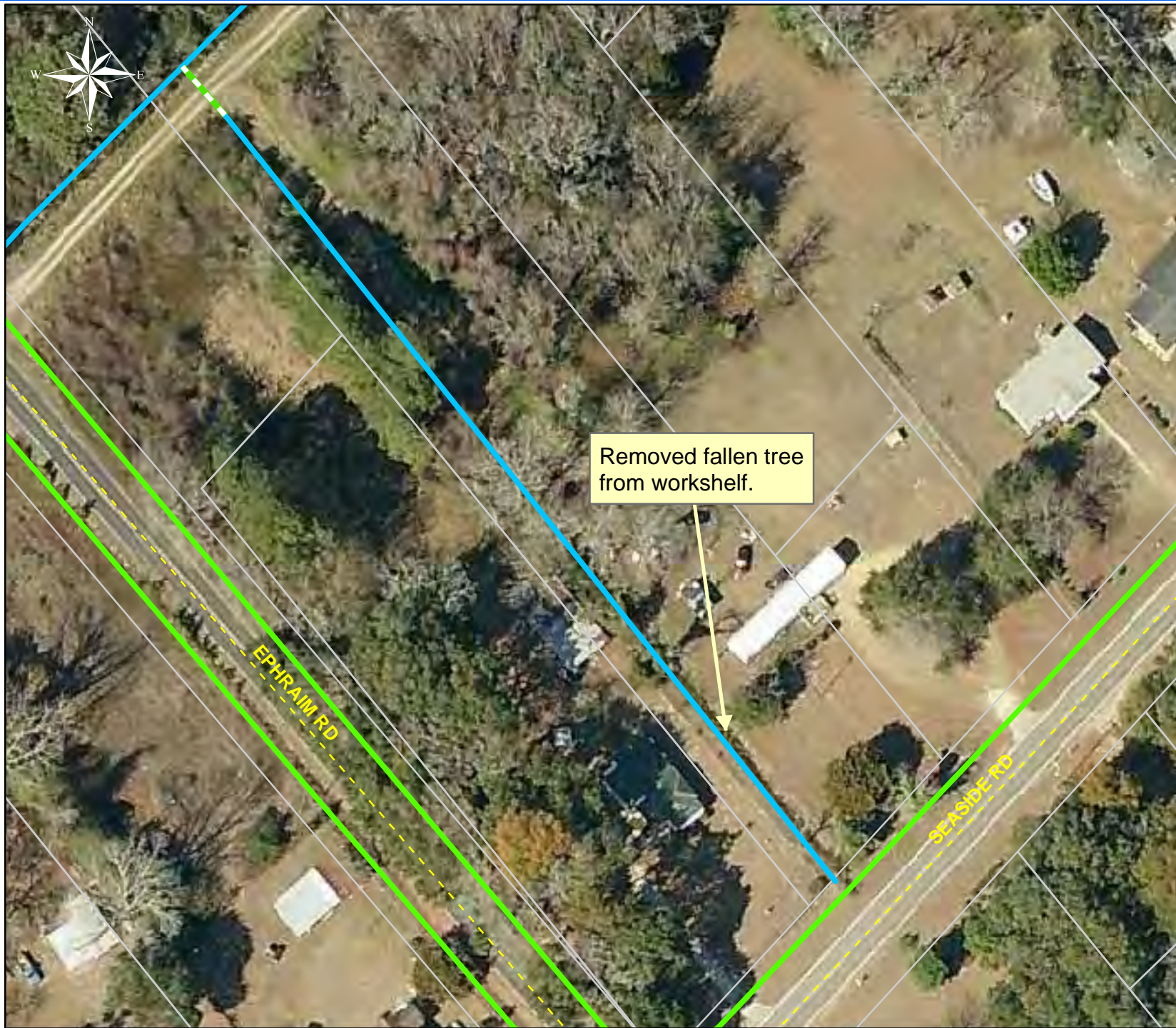
Narrative Description of Project:

Removed fallen tree from workshelf.

Completion: Apr-11

2011-619 / Seaside Road	Labor Hours	Labor Cost	Equipment Cost	Material Cost	Contractor Cost	Indirect Cost	Total Cost
AUDIT / Audit Project	0.50	\$10.24	\$0.00	\$0.00	\$0.00	\$0.00	\$10.24
HAUL / Hauling	13.00	\$287.76	\$106.48	\$149.62	\$0.00	\$0.00	\$543.86
LM / Loading Materials	0.50	\$10.71	\$14.88	\$3.47	\$0.00	\$0.00	\$29.06
LOAD / Loading	23.00	\$530.41	\$62.76	\$35.93	\$0.00	\$0.00	\$629.10
RMTRW / Remove trees - Workshelf	38.00	\$894.25	\$87.48	\$54.17	\$0.00	\$0.00	\$1,035.90
Indirect Labor, Services and Supplies	0.00	\$0.00	\$0.00	\$0.00	\$0.00	\$1,215.94	\$1,215.94
2011-619 / Seaside Road	75.00	\$1,733.37	\$271.60	\$243.18	\$0.00	\$1,215.94	\$3,464.09
Sub Total							
Grand Total	75.00	\$1,733.37	\$271.60	\$243.18	\$0.00	\$1,215.94	\$3,464.09

(Pictures Not Available)



Project: Seaside Road
Outfall

Activity: Drainage
Maintenance

Project #:
2011-619

Township: St.
Helena Island

Completed:
April 2011

Legend

Drainage Type

- River
- Stream
- Outfall
- Lateral
- Lateral Pipe
- Roadside
- Roadside Pipe
- Road Pipe
- Crossline
- D/W
- Access
- Piped
- Bleeder
- Parcels

0 35 70 140 210 280
Feet

1 inch = 77 feet

Prepared By: BC Stormwater Management Utility

Date Print: 6/13/11

File: C:/sethdata/projects/projectmaps/Seaside Rd Outfall 2011-619